



\$295
Model Shown

**LC509 Series
COMPRESSION**

0-2 to 0-100 lb
0-10 to 0-400 N

1 Newton = 0.2248 lb
1 daNewton = 10 Newtons
1 lb = 454 g
1 t = 1000 kg = 2204 lb

- ☑ Light Weight Aluminum Construction
- ☑ High Accuracy 0.25%
- ☑ 0.5 to 9.5 Vdc output
- ☑ Heavy Duty Construction for Weighing Applications
- ☑ Built-in Overload Stop

The LC509 Series Load Cell is a unique combination of a high accuracy beam type load cell with an internal amplifier giving a high level dc voltage output. Applications include industrial weighing and automated batching operations where the interfacing controller requires an amplified voltage input. Built-in overload stops and a rugged design make the LC509 a highly reliable transducer for industry plus it has the ability to have high tare offsets built in for OEM applications.

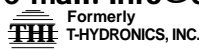
**For Sales and Service
In U.S.A. and Canada**

1-800-872-3963
1-800-USA-DYNE

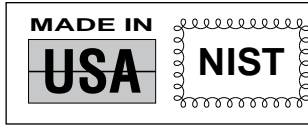
International Customers Dial
(614) 965-9340
24-Hour FAX (614) 965-9438

OMEGADYNESM FAX
OMEGADYNE's 24-Hour
On-Line Publishing Service
1-800-344-3963
1-800-DIG-DYNE
Document # 3644

OMEGADYNE, Inc.
149 Stelzer Court, Sunbury, OH 43074
<http://www.omegadyne.com>
e-mail: info@omegadyne.com



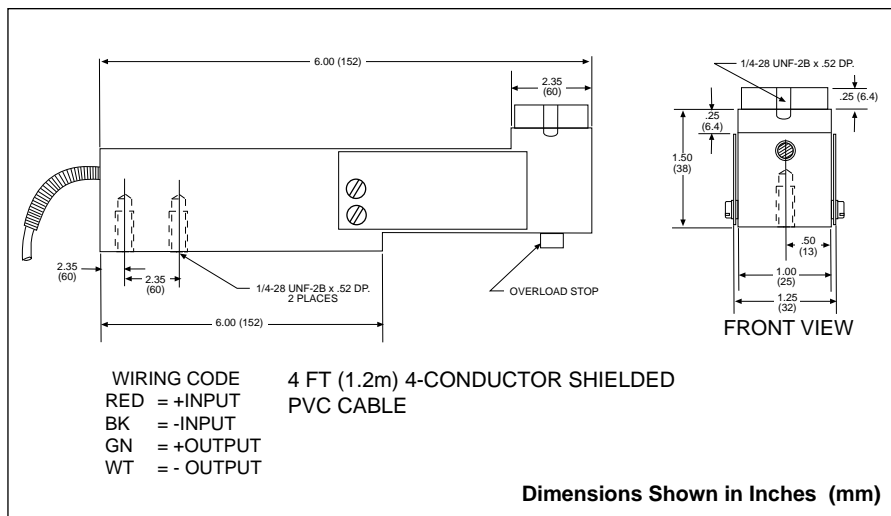
© COPYRIGHT 1996 OMEGADYNE, INC. ALL RIGHTS RESERVED.



**SPEC SHEET
LC509**

*Interchangeable with
Model TC-SL2V*

AMPLIFIED VOLTAGE OUTPUT BEAM TYPE LOAD CELL



SPECIFICATIONS:

Output: 0.5 to 9.5Vdc
Excitation: 24 Vdc ± 4Vdc
Accuracy Class: 0.25% FSO
 Linearity, Hysteresis, Repeatability:
 Zero Balance Combined
Operating Temp. Range:
 -48 to +60°C (-55 to +140°F)
Compensated Temp. Range:
 0 to +60°C (32 to +140°F)

Thermal Effects: ±0.69% FSO,
 Zero and Span Combined over
 compensated range

Overload to Stops:
 ≤ 25 lb: 500% of Capacity
 > 25 lb: 300% of Capacity

Ultimate Overload: 800% of Capacity
Construction: 2024-T351 Aluminum
Electrical: 4 ft (1.2m) 4-conductor
 shielded PVC Cable.

➔ **Most Popular Models Highlighted** ➔ **Prices Shown in U.S. Dollars**

To Order: (Specify Model Number)			
Capacity (lb)	Model Number	Price	Compatible Meters
0-5	LC509-005	\$295	INFW, INFS, INFCS
0-10	LC509-010	295	INFW, INFS, INFCS
0-25	LC509-025	295	INFW, INFS, INFCS
0-50	LC509-050	295	INFW, INFS, INFCS
0-100	LC509-100	295	INFW, INFS, INFCS

Interchangeable with Model TH-SL2V Metric Ranges Available-Consult Engineering.
Ordering Example: 1.) LC509-005 is a 5 lb capacity load cell with 7.75 lb offset and 0.5 to 9.5 Vdc output with 4 ft (1.2m) cable, \$295.

Printed On Recycled Paper